

# ODYSSEY TRUNKING CURVED PROFILE

DELIVERING INNOVATION  
[www.marshall-tufflex.com](http://www.marshall-tufflex.com)



UK OWNED  
UK MANUFACTURER



# 2 | Odyssey

Odyssey is a three-compartment trunking system with a completely curved front profile designed with tamper-resistant covers and fittings and flush accessories to enhance the finished appearance. Odyssey's curved profile is easy to clean and prohibits surface clutter.

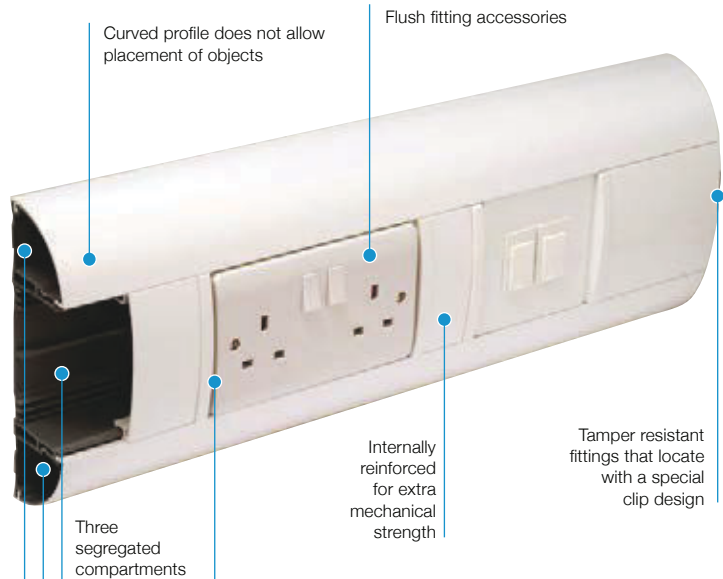


### Product information

- 180 x 57mm
- 1 main compartment and 2 smaller outer compartments
- Can be subdivided
- Suitable for dado application
- Available in antimicrobial Bio option (see page 3)
- Flush fitting accessories
- Tamper resistant covers and fittings

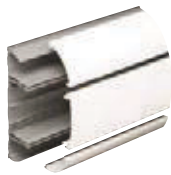
### Data information

- Compliant up to Cat 7a
- Standard bend radius 25mm
- Data fittings available for bend radius up to 65mm
- Steel divider available to BS EN 50174-2
- Can be screened against EMI with no reduction in cable capacity
- Adjustable data box 32-40mm
- Screened divider and data boxes



| Standard Colour |
|-----------------|
| WH              |
| WH: White       |

### Trunking profile



#### Trunking assembly (base and 3 covers)

| code  | size       | pack   |
|-------|------------|--------|
| DD1WH | 180 x 57mm | 1 x 3m |

### Part M

The Odyssey trunking range includes unique coloured accessory boxes that meet the requirements of Part M (DDA) please refer to page 5.



### Fittings



#### Coupler

| code     | pack |
|----------|------|
| DD1210WH | 1    |



#### End cap

| code     | pack |
|----------|------|
| DD1230WH | 2    |



#### Internal bend

| code     | pack |
|----------|------|
| DD1310WH | 1    |



#### Internal bend adjustable

| code     | adjustable | pack |
|----------|------------|------|
| DD1330WH | 85-95°     | 1    |



#### External bend

| code     | pack |
|----------|------|
| DD1350WH | 1    |



#### External bend adjustable

| code     | adjustable | pack |
|----------|------------|------|
| DD1370WH | 85 - 95°   | 1    |



#### Flat angle up/down

| code     | pack |
|----------|------|
| DD1410WH | 1    |



#### Flat tee 3 part assembly - up/down

| code     | pack |
|----------|------|
| DD1430WH | 1    |

### Flat tee cover

An option is available to order a flat tee cover only (DD1440WH). Please call the Technical Team on +44 (0)1424 856688.

Fittings



**MMT2 adaptor**

| code     | size | pack |
|----------|------|------|
| DD1740WH | MMT2 | 1    |



**Round conduit adaptor**

| code     | size | pack |
|----------|------|------|
| DD1720WH | 20mm | 1    |
| DD1725WH | 25mm | 1    |

**\*Box adaptors**

When installing adjustable boxes DD1540 and DD1550, a DD1590 adaptor should be used at either end of the box.

Where two or more adjustable boxes are being used in line, the spacer included is for use between boxes and a DD1590 adaptor is used at either end.

Boxes



**\*RCD housing**

| code      | pack |
|-----------|------|
| DD1580MWH | 1    |

Up to 4 modules can be accommodated

**Note:** RCDs are not supplied by Marshall-Tufflex



**1 gang accessory box**

| code     | depth | pack |
|----------|-------|------|
| DD1510WH | 30mm  | 20   |



**2 gang accessory box**

| code     | depth | pack |
|----------|-------|------|
| DD1520WH | 30mm  | 10   |



**\*1 gang adjustable depth box**

| code      | depth     | pack |
|-----------|-----------|------|
| *DD1540WH | 32 – 39mm | 10   |



**\*2 gang adjustable depth box**

| code      | depth     | pack |
|-----------|-----------|------|
| *DD1550WH | 32 – 39mm | 10   |



**\*Accessory box adaptor**

| code     | pack   |
|----------|--------|
| DD1590WH | 1 pair |

Each pack contains 2 adaptors



**1 gang power and data mounting frame**

| code     | pack |
|----------|------|
| DD1560WH | 2    |



**2 gang power and data mounting frame**

| code     | pack |
|----------|------|
| DD1570WH | 2    |

**Part M**

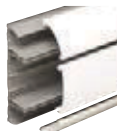
For boxes that meet the requirements of Part M (DDA) please refer to page 5.

Odyssey Bio



Odyssey is available as part of our standard range with Bio antimicrobial protection within the PVC-U material.

**Odyssey Bio trunking component chart**



**Odyssey trunking**  
180 x 57mm

| Trunking assembly | End cap (1 piece) | Coupler (1 piece) | Internal bend (1 piece) | Internal adjustable bend | External bend (1 piece) | External adjustable bend | Flat angle (up or down) | Flat tee (up or down) | 1 gang accessory box | 2 gang accessory box | 1 gang Bio power and data mounting frame | 2 gang Bio power and data mounting frame |
|-------------------|-------------------|-------------------|-------------------------|--------------------------|-------------------------|--------------------------|-------------------------|-----------------------|----------------------|----------------------|--|--|
|                   |                   |                   | ...CAT 7A+              | ...CAT 7A+               | ...CAT 7A+              | ...CAT 7A+               | ...CAT 7A+              | ...CAT 7A+            | ...CAT 7A+           | ...CAT 7A+           | ...CAT 7A+                               | ...CAT 7A+                               |
| DD1B Pack 1 x 3m  | DD1233WH Pack 2   | DD1213WH Pack 1   | DD1313WH Pack 1         | DD1333WH Pack 1          | DD1353WH Pack 1         | DD1373WH Pack 1          | DD1413WH Pack 1         | DD1433WH Pack 1       | DD1513WH Pack 20     | DD1523WH Pack 10     | DD1561WH Pack 2                          | DD1571WH Pack 2                          |



## Screening

Conductive spray (CS) is unique to Marshall-Tufflex and is applied in the factory to assist in screening from electromagnetic interference to data and communications cabling within trunking systems. The coating is applied to a range of data boxes, covers, clip-on components and fabricated fittings.



**WARNING:** A CS coating is not suitable for low voltage circuits. BS 7671:2008. For data/voice use only.

### Steel screening divider

|               |          |
|---------------|----------|
| code          | pack     |
| <b>DD1730</b> | 1 x 1.5m |

**Note:** optional steel screening divider to assist in compliance with BS EN 50174-2

### Steel screening divider bonding clip

|             |      |
|-------------|------|
| code        | pack |
| <b>ESF3</b> | 5    |

### Bonding strap

|               |      |
|---------------|------|
| code          | pack |
| <b>DD1711</b> | 5    |

## Odyssey screened component chart

|  |        |
|--|--------|
| <b>Odyssey trunking assembly screened – 1 compartment only</b> |        |
| Pack   | 1 x 3m |

|   |        |
|---|--------|
| <b>Odyssey trunking assembly screened – compartment 1 &amp; 3</b> |        |
| Pack  | 1 x 3m |

|                               |   |
|-------------------------------|---|
| <b>Flat angle (1 &amp; 3)</b> |   |
| Pack                          | 1 |

|                             |   |
|-----------------------------|---|
| <b>Flat tee (1 &amp; 3)</b> |   |
| Pack                        | 1 |

For covers only, please contact the technical team

|                             |   |
|-----------------------------|---|
| <b>1 gang accessory box</b> |   |
| Pack                        | 1 |

|                             |   |
|-----------------------------|---|
| <b>2 gang accessory box</b> |   |
| Pack                        | 1 |

## 3 Compartment

Odyssey CS1



DD1001WH

DD1002WH

DD1412WH

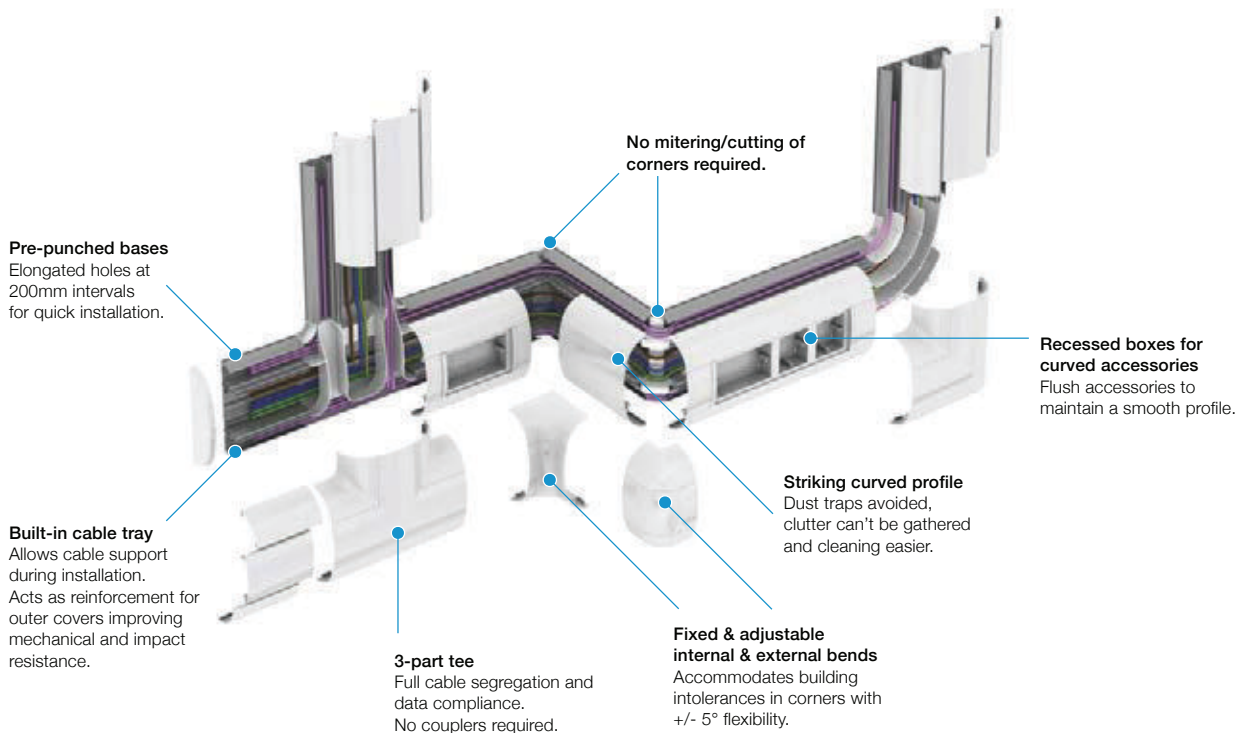
DD1432WH

DD1511WH

DD1521WH

## Odyssey Trunking

Odyssey can enhance the look of a project as well as providing all of the practical features that ensure fast and easy installation.



## Part M

# DDA COMPLIANT BOXES FOR VISUAL IMPAIRMENT

Part M of the UK Building Regulations for Visual Impairment requires that face plates differ in colour from their background. Coloured accessory boxes provide a different colour frame to contrast against standard white accessories and are offered as part of our standard product range in blue (RAL5002) and charcoal (RAL7021).



Odyssey trunking with Part M boxes installed at Old Swinford Hospital School, Stourbridge.

### 1 and 2 gang accessory boxes for Odyssey trunking

| code     | description       | pack |
|----------|-------------------|------|
| DD1510BU | 1 gang – blue     | 20   |
| DD1510CH | 1 gang – charcoal | 20   |
| DD1520BU | 2 gang – blue     | 10   |
| DD1520CH | 2 gang – charcoal | 10   |



### 1 and 2 gang power and data mounting frame for Odyssey trunking

| code     | description             | pack |
|----------|-------------------------|------|
| DD1560BU | 1 gang – blue plate     | 2    |
| DD1560CH | 1 gang – charcoal plate | 2    |
| DD1570BU | 2 gang – blue plate     | 2    |
| DD1570CH | 2 gang – charcoal       | 2    |



Plates are available in other colours subject to set up charges, minimum order quantities and longer lead times.

For more information and a quotation contact our Technical Team on +44 (0)1424 856688

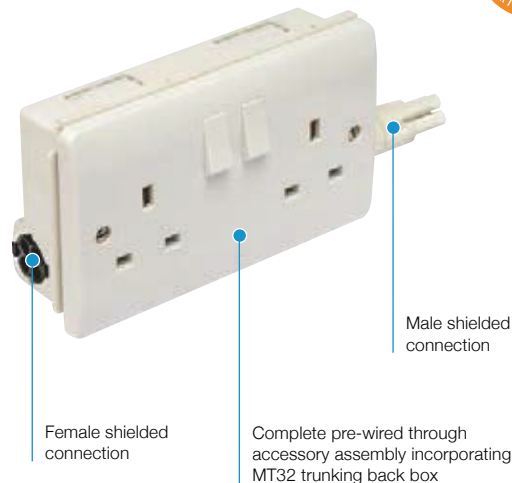
## MT32 PREFABRICATED AND MODULAR WIRING SYSTEMS



MT32 prefabricated and modular wiring systems are designed to take all the hard work out of electrical installations by providing the complete pre-wired, pre-tested, plug and play electrical wiring system.

The system provides fast, safe, labour and cost saving installations that comply with BS 8488:2009+A1:2010 for prefabricated wiring systems intended for permanent connection in fixed installation.

The range of pre-wired, pre-tested and assembled interconnecting leads and accessory modules incorporate the Marshall-Tufflex compact 32Amp connector.



### Product information

- 32Amp rated system
- Available as LSOH 3 core 2.5mm<sup>2</sup> flex system specification that meets the requirement for high integrity earthing
- Suitable for ring and radial circuits
- Circuit testing only required on completion of final layout
- Reduced installation time – no cutting required on site
- Reduced health & safety risk

### Pre-wired accessories



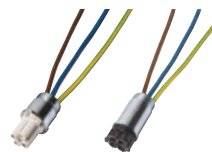
#### Extension cable 2.5mm<sup>2</sup>

| code   | length | pack |
|--------|--------|------|
| AA3330 | 0.5m   | 1    |
| AA3332 | 1.5m   | 1    |
| AA3333 | 3.0m   | 1    |
| AA3335 | 5.0m   | 1    |



#### Connection cable free end 2.5mm<sup>2</sup>

| code            | length | pack |
|-----------------|--------|------|
| AA3732 (male)   | 1.5m   | 1    |
| AA3532 (female) | 1.5m   | 1    |



#### Male and female adaptors 2.5mm<sup>2</sup>

| code            | length | pack |
|-----------------|--------|------|
| AA7211 (male)   | 220mm  | 1    |
| AA7212 (female) | 220mm  | 1    |

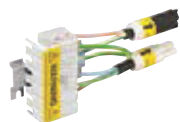
For adapting distribution board to modular system  
**Note:** to fit 20mm knockout



#### Adaptor cables 2.5mm<sup>2</sup>

| code                   | length | pack |
|------------------------|--------|------|
| AA8901 (male/male)     | 0.5m   | 1    |
| AA8902 (female/female) | 0.5m   | 1    |

Required for ring circuit



#### Terminal block 2.5mm<sup>2</sup>

| code                 | size               | pack |
|----------------------|--------------------|------|
| AA6510 (female/male) | 2.5mm <sup>2</sup> | 1    |



#### Pre-wired accessory 2.5mm<sup>2</sup>

| code   | size   | pack |
|--------|--------|------|
| AA6221 | 2 gang | 1    |

### MT32 Connectors

The description 'male' (white) and 'female' (black) does not refer to the connector pins but describes and identifies the moulded connector housings.

For further information please contact our Technical Team on +44 (0)1424 856688.

## Odyssey trunking

### Material

Odyssey accessory boxes and fittings are flame retardant ABS which is 100% recyclable.

### Installation

#### Positioning

For dado, horizontal or vertical installation.

#### Expansion/contraction

PVC-U expands and contracts at a uniform rate of approx 5.25mm in a 3 metre length for a temperature change of 25°C. Therefore, a 3mm gap between each length of trunking base is recommended.

Adequate allowance is made within the fittings for thermal movement of the covers, which have a 10mm overlap on each side.

#### Fitting

- The base is supplied with pre-cut elongated holes at 250mm centres.
- Internal couplers on base units are not required.
- To fasten base, use No 8 round head screws and washers.
- Avoid over-tightening to permit thermal movement.
- The use of plastic caps over screw heads is recommended to protect installed cables.
- To cut the trunking, use a fine-toothed panel or power jig-saw.
- External moulded fittings overlap the joints by up to 10mm to cover cutting inaccuracies.
- A variable angle jig-saw or chop saw is recommended for cutting 45 degree mitres.

#### Single lengths

Where it is required to fit a single length of trunking (under 3 metres) between two inside walls and no accessory box is fitted, it is advisable to install a coupler in the centre of the run to facilitate the removal of the covers.

### Joints and bends

All base joints should have a 3mm gap to allow for expansion.

- **Internal bends:** the two base sections should be cut square and butt joined at the corner. The internal end cap component should be fitted to the open end to maintain trunking integrity.
- **External bends:** the base must be cut square with the corner and the internal radius control segregator fitted into the two base sections. Adjustable bends: these allow 85° to 95° to accommodate building tolerances.
- **Flat bends and tees:** have moulded and segregated base units. These are fitted into position and the trunking base then cut to butt up to mouldings.

Cutting is not critical as the external moulded clip-on fittings cover the joints and overlap the trunking covers by 10mm each side, thus covering any inaccuracies.

#### Bend radius control

The bend radius control fittings for Odyssey provide a bend radius of 25mm, 50mm and 65mm.

#### Accessory boxes

Accessory boxes are mounted in the centre compartment. If supplied from either of the outer compartments, drill the main web adjacent to the box position. Remove the appropriate knock out and clip the box into the trunking base. For boxes in the same compartment as the supply, remove the appropriate box knock-outs and clip the box into trunking base.

- If boxes DD1510 and DD1520 are installed consecutively, a cut section of centre cover should be fitted between them.
- If DD1540 or DD1550 are installed, Adaptor DD1590 must be fitted either side to align with curved cover.
- If DD1540 or DD1550 are installed consecutively, use the spacer provided and at each end of a run use accessory adaptor DD1590 to align with curved cover.
- Part M coloured accessory boxes are available to meet the requirements of DDA regulations for Visual Impairment.

### Covers

The covers have been designed to limit unauthorised removal and remain in position during normal conditions, irrespective of impact and minor undulations of the mounting surface.

#### Covers – fitting

Outer covers are fitted first. Locate front clip feature into the base and then roll the cover to the back of the trunking until the rear clip feature positively locates – it is possible to hear the click when this is located correctly. The centre cover is then clipped into place from the front. If accessory boxes are installed, the centre cover is butt joined beneath the moulded flange of the box (Odyssey box DD1510/DD1520) or adaptor (DD1590). The cut edges of lids are then concealed.

A gap of 15mm should be left between cover joints to permit fittings to clip to the base.

#### Covers – removal

To remove a cover, first detach a coupler, internal or external bend component to gain access. The main cover can then be gently eased off the base. To remove the outer cover, firstly ease from the base by inserting the blade of a terminal screwdriver between the captive legs of the cover and the base and then peel off.

#### Screening

Special conductive spray coating can be applied to one compartment, the cover, accessory boxes and fittings, to screen data cables against EMI interference.

- **For data/voice circuits only:**  
Warning: Owing to its relatively high surface resistance, CS coating SHOULD NOT be in contact with low voltage circuits BS 7671:2008 50 V.A.C. – 1000 V.A.C. unless additional measures are undertaken.

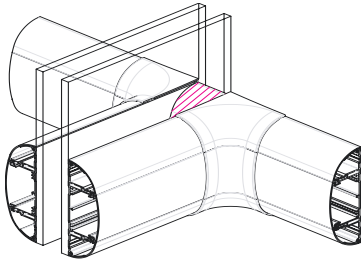
#### Antimicrobial

For technical details of antimicrobial Odyssey Bio trunking, please refer to Laboratory and Healthcare section of our main catalogue.

## Odyssey trunking – continued

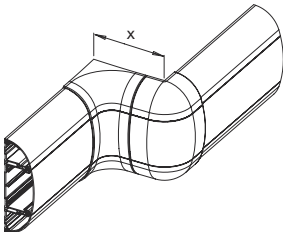
### Method of continuation through a partition wall

Continue the main lateral run of base through the partition wall with short lengths of cover fitted where the trunking passes through the partition. The partition wall trunking is then butted up to the main run and the joint covered by an Internal bend. (as shown below)



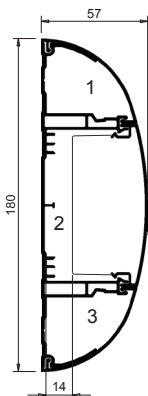
### Offset dimensions

The minimum set that can be accommodated in the same plane (from internal to external bend), is shown below.



x =  
 Fixed bend offset 138mm  
 Adjustable bend offset 165mm  
 Adjustable external bend, fixed internal bend offset 163mm  
 Adjustable internal bend, fixed external bend offset 140mm

### Dimensions



#### Odyssey trunking – with box

Compartment 1 & 3 total area = 1278mm<sup>2</sup>  
 Compartment 2 total area = 859mm<sup>2</sup>

#### Odyssey trunking – no box

Compartment 2 total area = 3972mm<sup>2</sup>

### Cable capacities

- All calculations allow for a 45% space factor.

As there can be differences between data cable sizes, Marshall-Tufflex recommend that cable dimensions are confirmed with the manufacturing company.

| Cable capacity chart                                  | Compartment 1 |          | Compartment 2 |          | Compartment 3 |          |
|---|---------------|----------|---------------|----------|---------------|----------|
|   | No box        | With box | No box        | With box | No box        | With box |
| PVC power cable<br>1.5mm <sup>2</sup> stranded copper | 71            | –        | 226           | 69       | 71            | –        |
| PVC power cable<br>2.5mm <sup>2</sup> stranded copper | 47            | –        | 152           | 47       | 47            | –        |
| PVC power cable<br>4.0mm <sup>2</sup> stranded copper | 34            | –        | 109           | 33       | 34            | –        |
| Data cable: Ø5.5mm                                    | 24            | –        | 76            | 23       | 24            | –        |
| Data cable: Ø6.0mm                                    | 20            | –        | 64            | 20       | 20            | –        |
| Data cable: Ø6.5mm                                    | 18            | –        | 56            | 17       | 18            | –        |
| Data cable: Ø7.0mm                                    | 15            | –        | 47            | 14       | 15            | –        |
| Data cable: Ø8.4mm                                    | 10            | –        | 33            | 10       | 10            | –        |



# INTERNATIONAL DISTRIBUTORS

We distribute our cable management products to over 40 countries worldwide and welcome the opportunity to discuss any projects or requirements you may have. Below are the details of our main distributors around the world.



**Bahrain**  
Amad Baeed Electrical W.L.L.  
+973 1745 6590  
sales@amadbaeed.com  
www.amadbaeed.com



**Cyprus**  
Andrews Electrical  
+357 2249 0278  
a.y@andrewselectrical.com.cy  
www.andrewselectrical.net



**Egypt**  
Light Import Establishment  
+20 22291 1099  
info@lightegy.com  
www.lightegy.com



**Gibraltar**  
A.J.Sheriff Electrical  
+350 2006 1561  
info@ajsheriffelectrical.com  
www.ajsheriffelectrical.com



**India**  
Vector Projects (I) Pvt. Ltd.  
+91 226769 3312  
gopi@vectorprojectsindia.com  
www.vectorprojectsindia.com



**Kuwait**  
Al-Dhow Engineering  
+965 2291 5440  
zoheb@al-dhow.com  
www.al-dhow.com



**Libya**  
Gamma Ltd  
+218 21444 1653  
moser@gamma.com.ly



**Malaysia**  
Originex Electric Sdn Bhd  
+60 37847 6882  
koo@originex.com  
www.originex.com



**Malta**  
Calleja  
+356 2144 0341  
info@calleja.com.mt  
www.calleja.com.mt



**New Zealand**  
Ellis & Co Ltd  
+64 09570 5267  
info@ellis.co.nz  
www.ellis.co.nz



**Northern Ireland**  
Core Electrical Ltd  
+44 28 900 200 66  
info@coreelectrical.com  
www.coreelectrical.com



**Qatar**  
Mannai Trading Co. WLL  
+974 4455 8888  
info@mannai.com.qa  
www.mannai.com



**Republic of Ireland**  
Core Electrical Ltd  
+353 1453 7033  
info@coreelectrical.ie  
www.coreelectrical.com



**Russia**  
ICS Group  
+7 495720 4900  
ics@icsgroup.ru  
www.icsgroup.ru



**Saudi Arabia**  
HAWA Trading Est - Al-Khobar  
+966 13 864 1464  
farid@hawatrade.com  
www.hawatrade.com



**Saudi Arabia**  
HAWA Trading Est - Jeddah  
+966 12 663 1268  
hawajeddah@hawatrade.com  
www.hawatrade.com



**Sri Lanka**  
Bianco (Pvt) Ltd  
+94 250 7252  
bianco@sltnet.lk  
www.bianco.lk



**UAE**  
Titan GT FZC  
+971 6740 6689  
marshall-tufflex@titanuae.com  
www.titanuae.com



If you would like to discuss distribution of our products worldwide, please email [international@marshall-tufflex.com](mailto:international@marshall-tufflex.com) or telephone +44 (0)1424 856652



UK OWNED  
UK MANUFACTURER

### Marshall-Tufflex Ltd

Churchfields Industrial Estate  
Hastings  
East Sussex  
TN38 9PU  
United Kingdom

**T** +44 (0)1424 856600  
**F** +44 (0)1424 856611  
**E** sales@marshall-tufflex.com  
**www.marshall-tufflex.com**

**Technical Hotline:**  
+44 (0)1424 856688



### Collect your order from our branches:

London (E17 6DJ)  
Manchester (M26 1GG)  
Hastings (TN38 9NU)

### Republic of Ireland distributor

Core Electrical Ltd  
17b Goldenbridge Industrial Estate  
Tyrconnell Road, Inchicore  
Dublin 8, D08 WD50

**T** +353 (0)1453 7033  
**F** +353 (0)1453 8911

### Northern Ireland distributor

Core Electrical Ltd  
Unit 4 Duncrue Industrial Park  
Duncrue Road  
Belfast, BT3 9BP

**T** +44 (0)28 900 200 66  
**F** +44 (0)28 900 213 08

In pursuance of our policy of continued product improvement Marshall-Tufflex reserve the right to change the design or specification of its products without notification.

